



Seneca County General Health District

92 E. Perry St., Tiffin OH 44883

Phone: (419) 447-3691

General Fax: (419) 448-5782

401 Kirk St., Fostoria OH 44830

Phone: (419) 435-4401

www.senecahealthdept.org

Monkeypox (MPV) Virus Fact Sheet

Monkeypox Situation

On July 23, 2022, the World Health Organization (WHO) declared Monkeypox (MPV) a global public health emergency, the highest level of alert. The CDC is tracking multiple cases of MPV that have been reported in several countries that don't normally report MPV, including the United States.

As of Aug. 2, there have been 26 cases of MPV reported in Ohio. For an up-to-date map and case count, visit the [CDC situational summary page](#).

About Monkeypox (MPV) Virus

Monkeypox (MPV) is a rare disease caused by infection with monkeypox virus. MPV spreads between people primarily through direct contact with infectious sores, scabs, or body fluids. It also can be spread by respiratory secretions during prolonged, face-to-face contact.

MPV can spread during intimate contact between people. MPV is not a sexually transmitted disease, but it can be spread through sex and other close contact activities. Anyone can get MPV.

Symptoms:

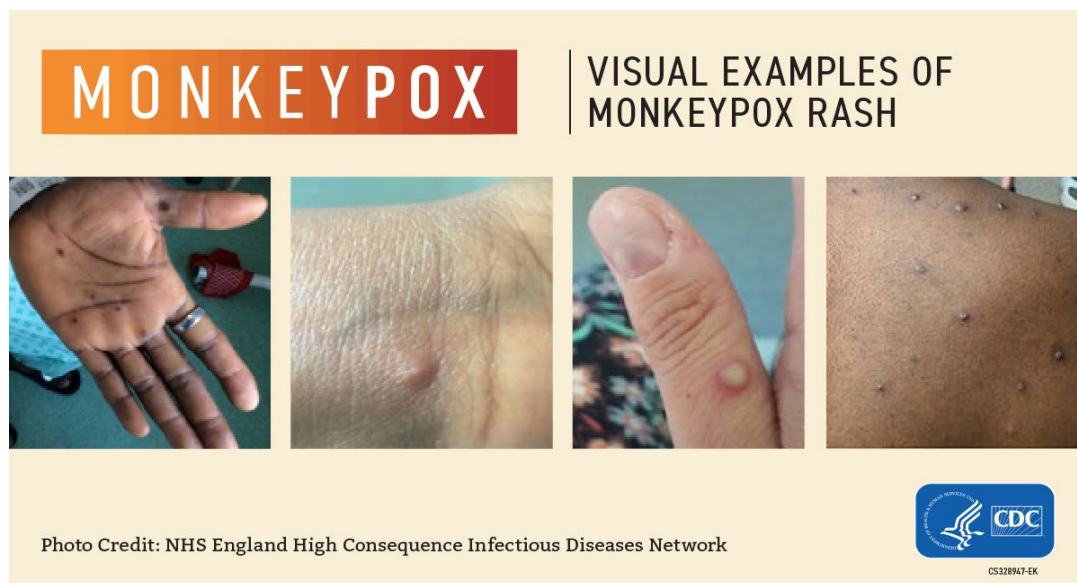
MPV is a viral illness that typically begins with flu-like symptoms and swelling of the lymph nodes and progresses to a rash. Cases recently identified across the country appear less likely to have the initial symptoms of flu-like illness or lymph node swelling and the rash, which may look like pimples or blisters, may also stay contained to a particular part of the body.

Am I at risk?

Risk to the general public is low, but you should seek medical care right away if you develop an unexplained rash that [looks like MPV](#), even if you don't think you had contact with someone who has MPV.

People at higher risk include those who:

- Had contact with someone who had a rash that looks like MPV or someone who was diagnosed with MPV
- Had skin-to-skin contact with someone experiencing MPV activity
- Traveled outside the US to a country with confirmed cases of MPV
- Had contact with a dead or live wild animal or exotic pet that exists only in Africa or used a product derived from such animals (e.g., game meat, creams, lotions, powders, etc.)
- Anyone can get MPV, but currently the outbreak is concentrated among men who have sex with men



More information:

Visit the [CDC](#) for more information. You can also visit the [WHO's webpage](#).